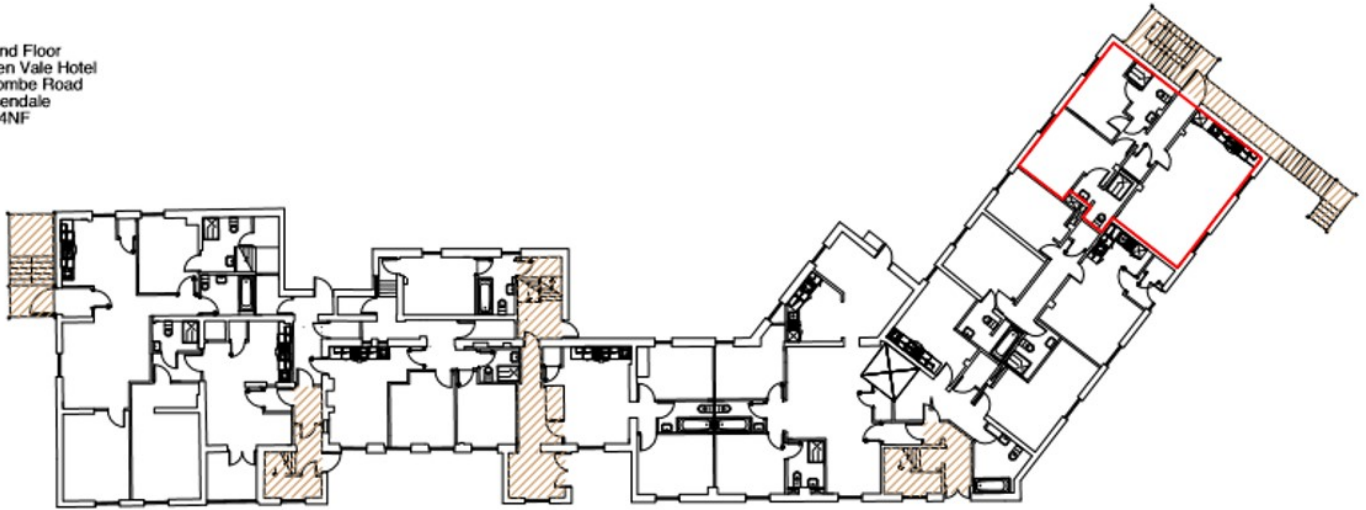


APARTMENT 1

HOLDEN VALE, HOLCOMBE ROAD, HELMSHORE, BB4 4NF



Ground Floor
Holden Vale Hotel
Holcombe Road
Rossendale
BB4 4NF



Ground Floor

Room	Size (Approx.)
Hall	2.84m x 2.24m
Utility / Store	
Lounge / Dining / Kitchen	6.84m x 3.94m
Bedroom 1	3.99m x 3.71m
En-Suite Shower Room	
Bedroom 2	3.93m x 2.74m
Shower Room	



Farrow & Farrow
The Modern Estate Agent



improving lives **headoffice³**
education | residential | corporate