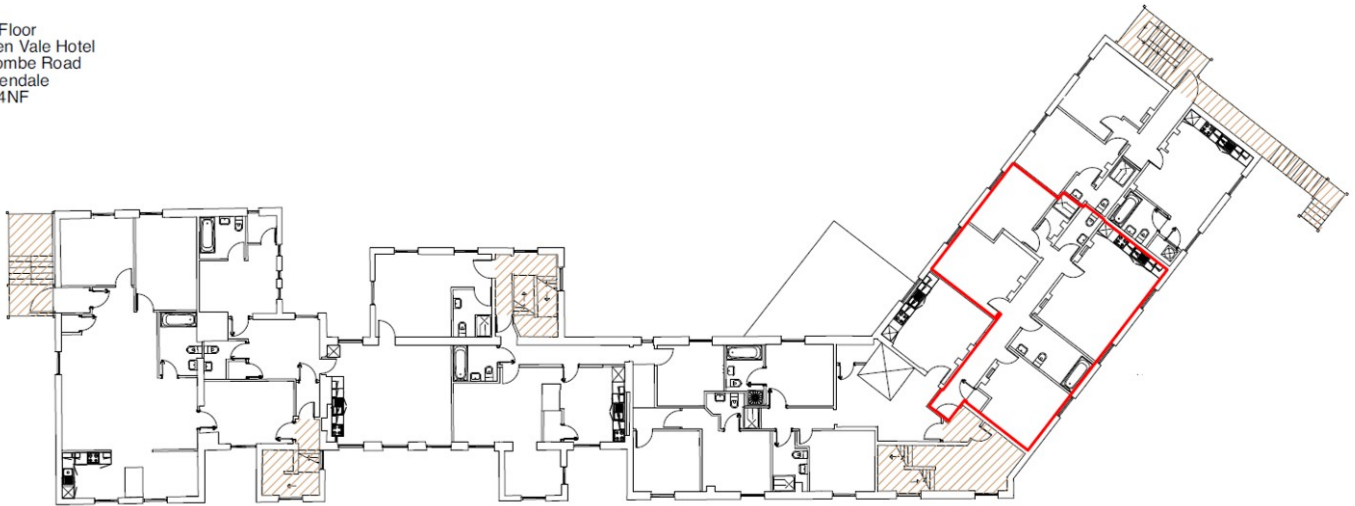


APARTMENT 10

HOLDEN VALE, HOLCOMBE ROAD, HELMSHORE, BB4 4NF

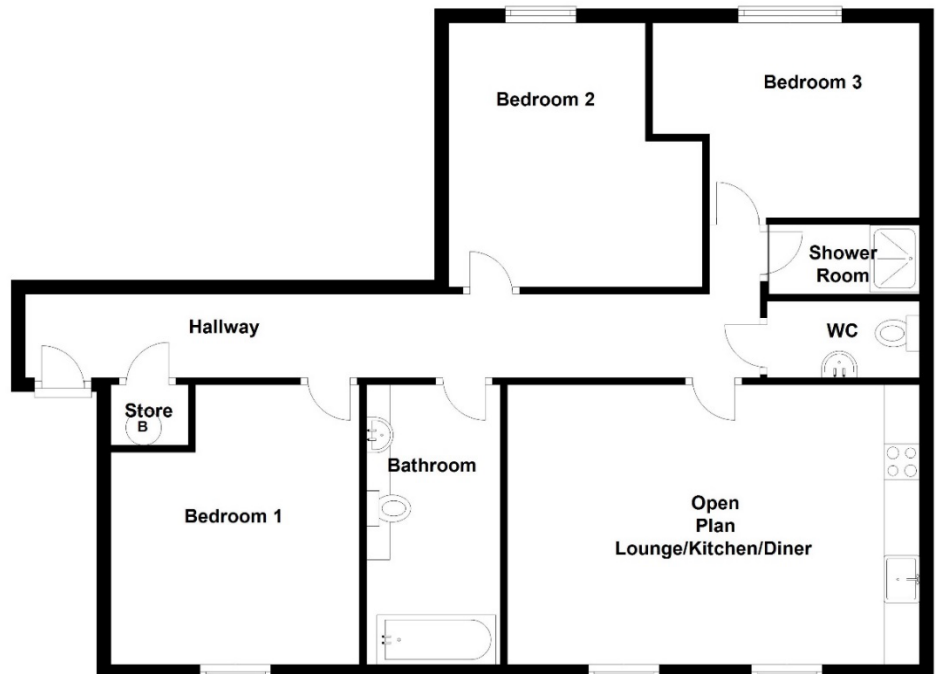


First Floor
Holden Vale Hotel
Holcombe Road
Rossendale
BB4 4NF



First Floor

Room	Size (Approx.)
Hallway	10.38m x 1.18m
Lounge / Dining / Kitchen	5.82m x 3.95m
Utility / Store	
WC	2.18m x 1.08m
Bedroom 1	3.99m x 3.51m
Bedroom 2	3.95m x 3.58m
Bedroom 3	3.66m x 2.75m
Bathroom	3.95m x 1.89m
Shower Room	2.13m x 0.98m



Farrow & Farrow
The Modern Estate Agent



improving lives **headoffice³**
education | residential | corporate