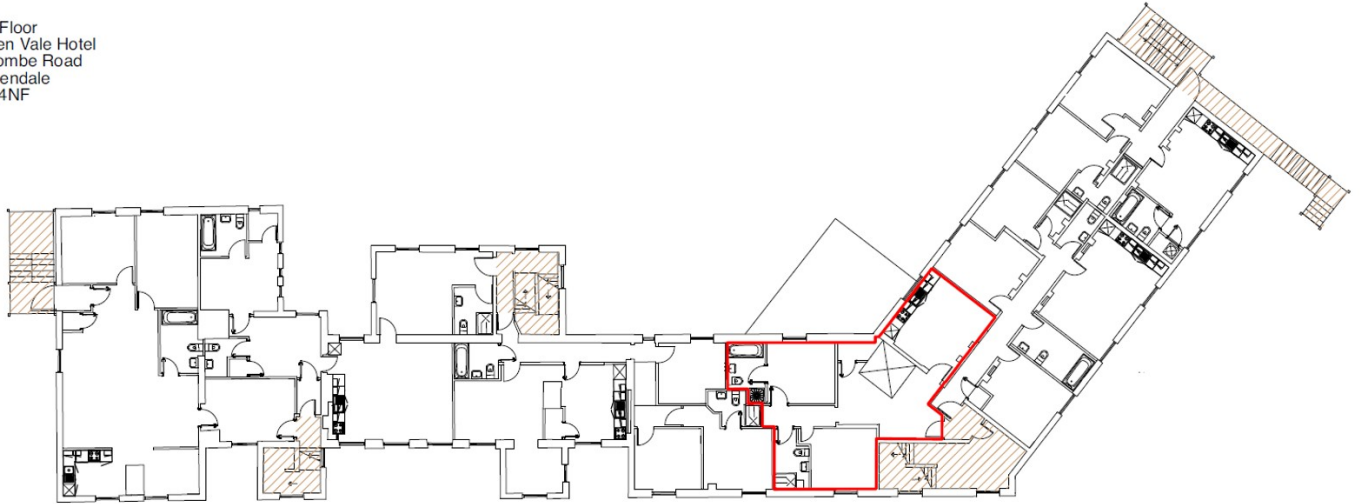


# APARTMENT 11

HOLDEN VALE, HOLCOMBE ROAD, HELMSHORE, BB4 4NF



First Floor  
Holden Vale Hotel  
Holcombe Road  
Rossendale  
BB4 4NF

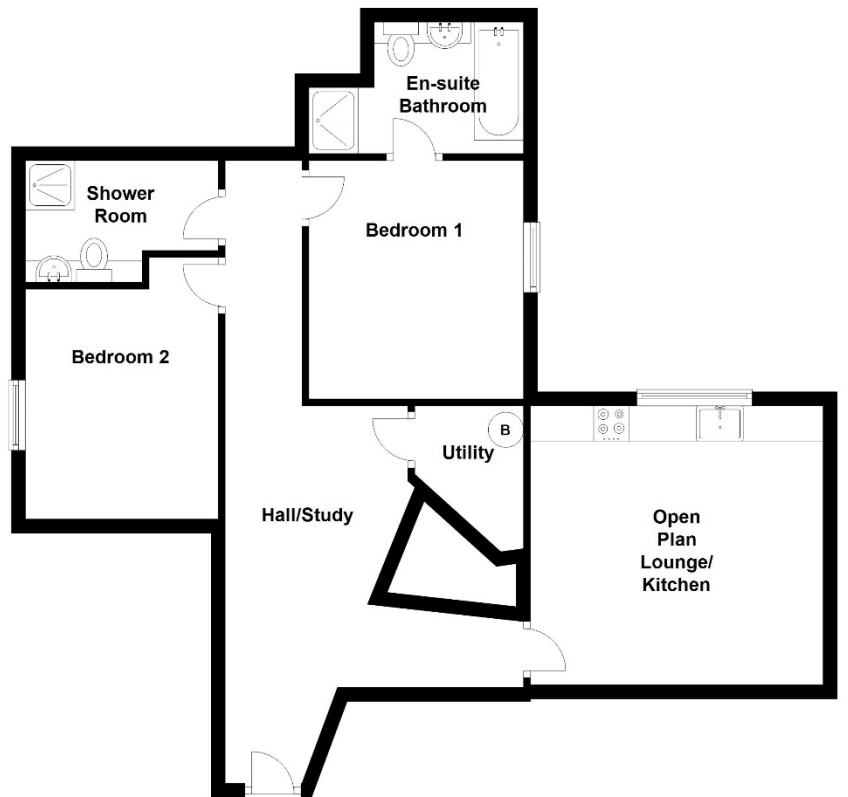


First Floor

Room

Size (Approx.)

Hall / Study	
Utility / Store	2.05m x 1.48m
Lounge / Kitchen	4.16m x 3.97m
Bedroom 1	3.39m x 3.05m
En-Suite Bathroom	3.05m x 1.87m
Bedroom 2	3.27m x 2.74m
Shower Room	2.74m x 1.73m



**Farrow & Farrow**  
The Modern Estate Agent



improving lives **headoffice<sup>3</sup>**  
education | residential | corporate