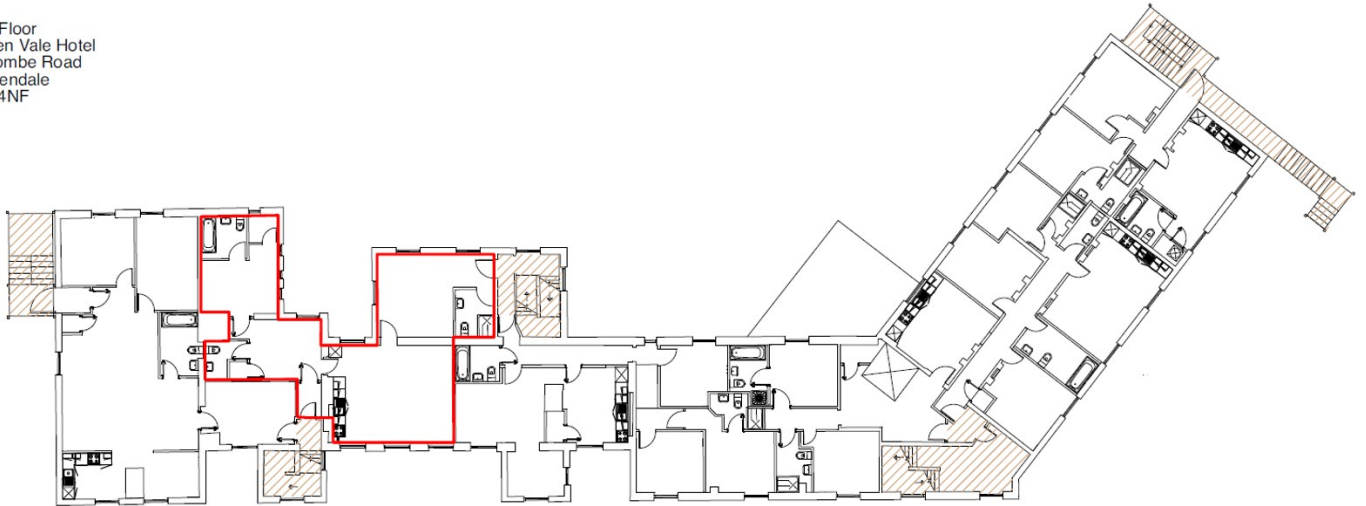


# APARTMENT 13

HOLDEN VALE, HOLCOMBE ROAD, HELMSHORE, BB4 4NF



First Floor  
Holden Vale Hotel  
Holcombe Road  
Rossendale  
BB4 4NF

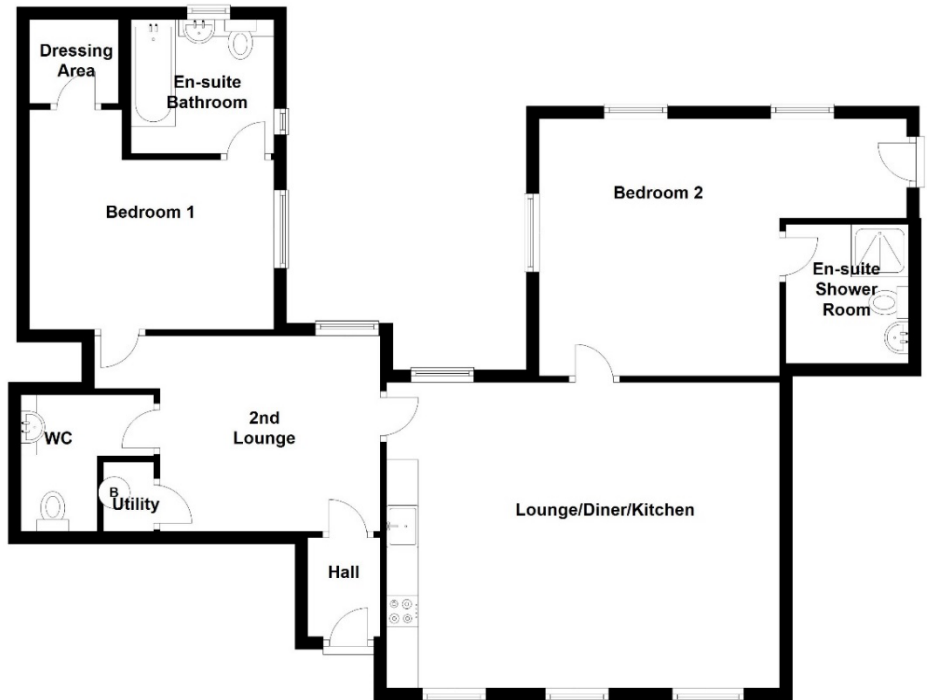


First Floor

## Room

## Size (Approx.)

Hall	1.56m x 1.14m
Lounge / Dining / Kitchen	6.19m x 4.83m
2 <sup>nd</sup> Lounge	3.47m x 3.08m
WC	2.09m x 1.93m
Utility / Store	1.09m x 0.79m
Bedroom 1	3.83m x 3.46m
Dressing Area	1.47m x 1.32m
En-Suite Bathroom	2.25m x 2.11m
Bedroom 2	5.68m x 4.05m
En-Suite Shower Room	2.19m x 1.93m



**Farrow & Farrow**

The Modern Estate Agent



improving lives **headoffice<sup>3</sup>**  
education | residential | corporate