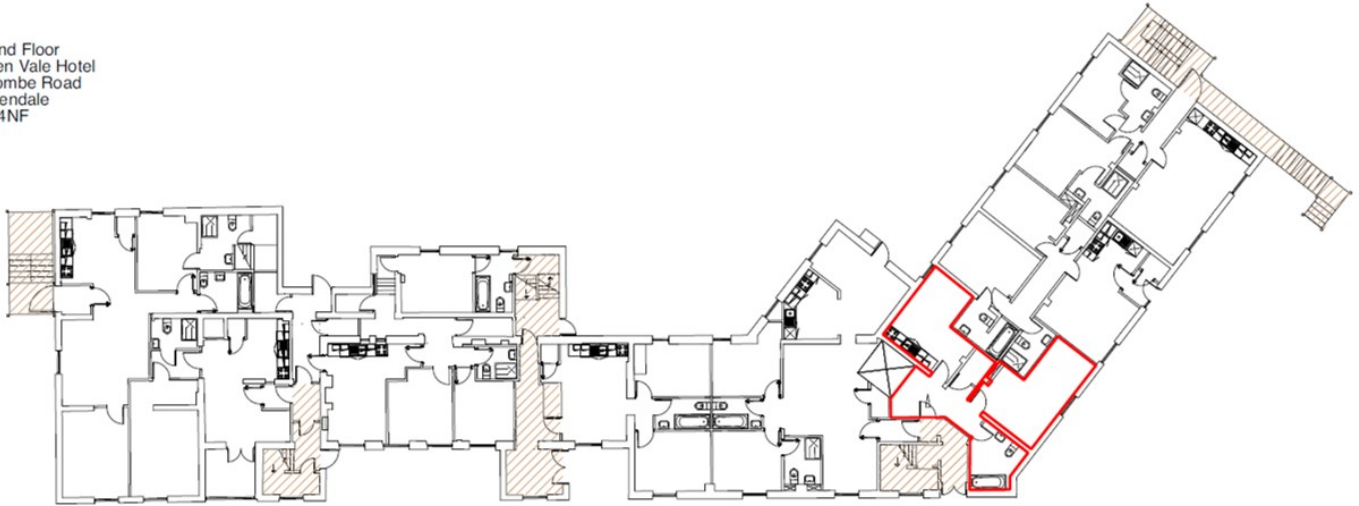


APARTMENT 3

HOLDEN VALE, HOLCOMBE ROAD, HELMSHORE, BB4 4NF



Ground Floor
Holden Vale Hotel
Holcombe Road
Rossendale
BB4 4NF

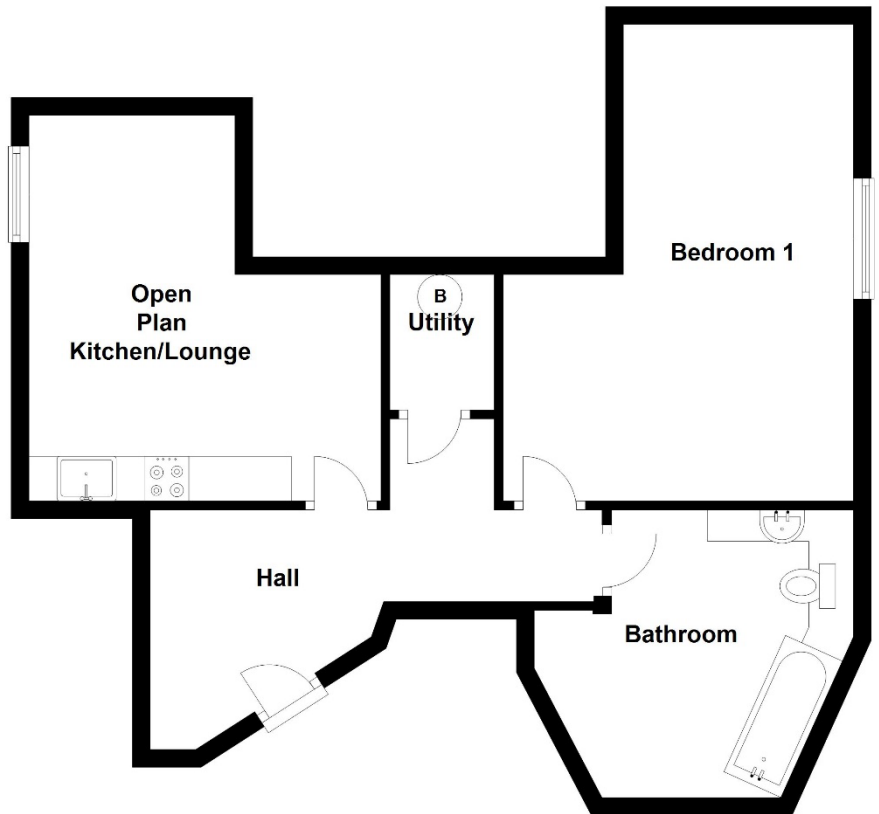


Ground Floor

Room

Size (Approx.)

Hall	
Lounge / Kitchen	4.31m x 3.95m
Utility / Store	1.52m x 1.17m
Bedroom 1	5.35m x 3.73m
Bathroom	



Farrow & Farrow
The Modern Estate Agent



improving lives **headoffice³**
education | residential | corporate