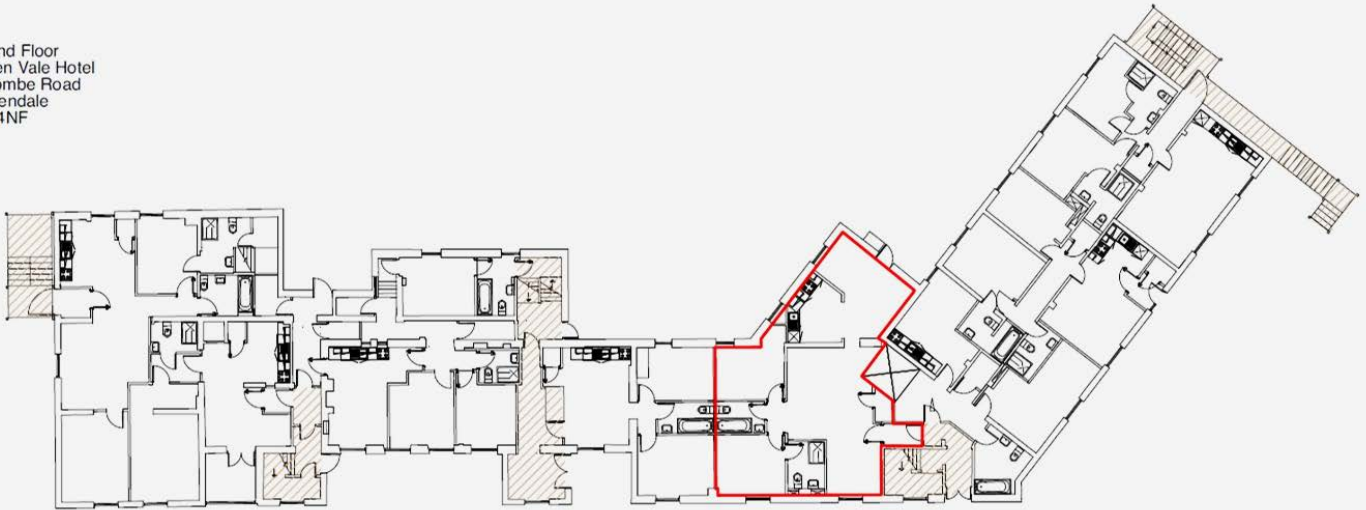


APARTMENT 4

HOLDEN VALE, HOLCOMBE ROAD, HELMSHORE, BB4 4NF

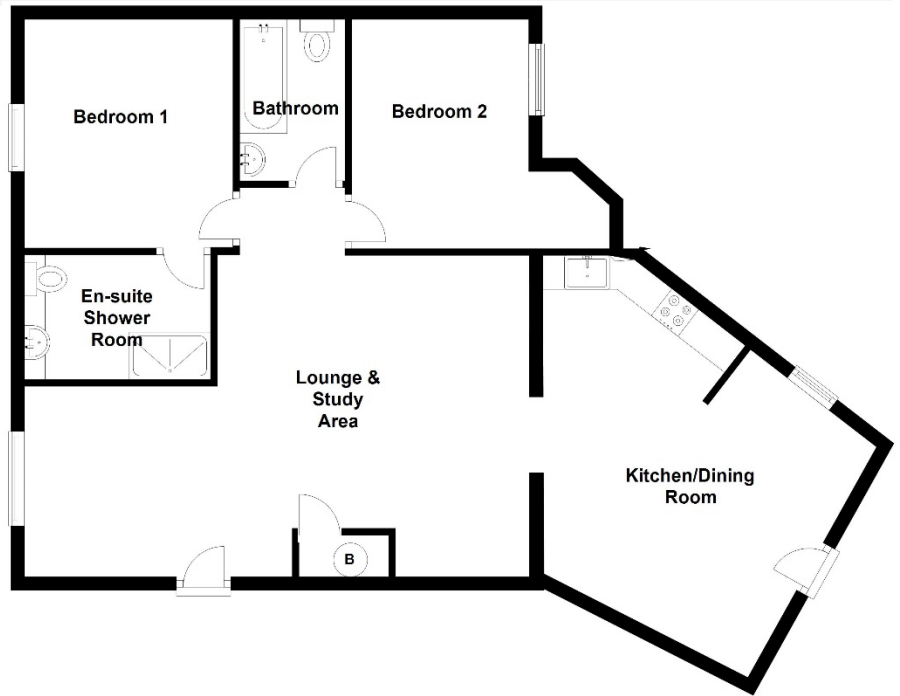


Ground Floor
Holden Vale Hotel
Holcombe Road
Rossendale
BB4 4NF



Ground Floor

Room	Size (Approx.)
Lounge & Study Area	7.35m x 5.74m
Utility / Store	
Kitchen / Dining Room	6.11m x 4.28m
Bedroom 1	3.37m x 3.00m
En-Suite Shower Room	2.29m x 1.84m
Bedroom 2	3.79m x 3.38m
Bathroom	2.23m x 1.56m
Garden	



Farrow & Farrow
The Modern Estate Agent



improving lives **headoffice³**
education | residential | corporate