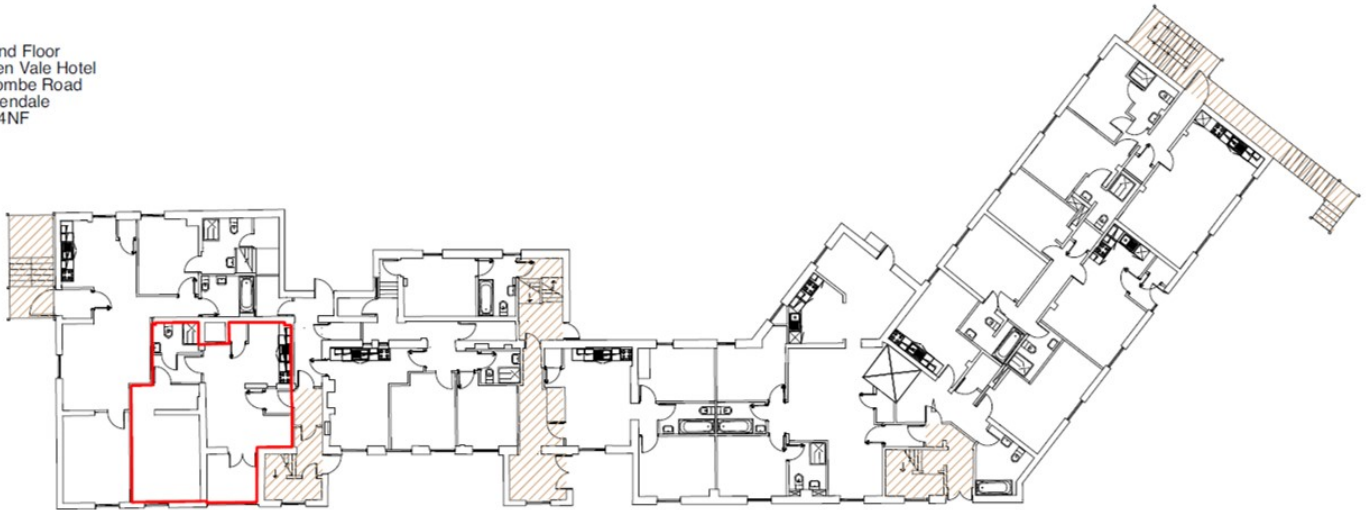


# APARTMENT 7

HOLDEN VALE, HOLCOMBE ROAD, HELMSHORE, BB4 4NF

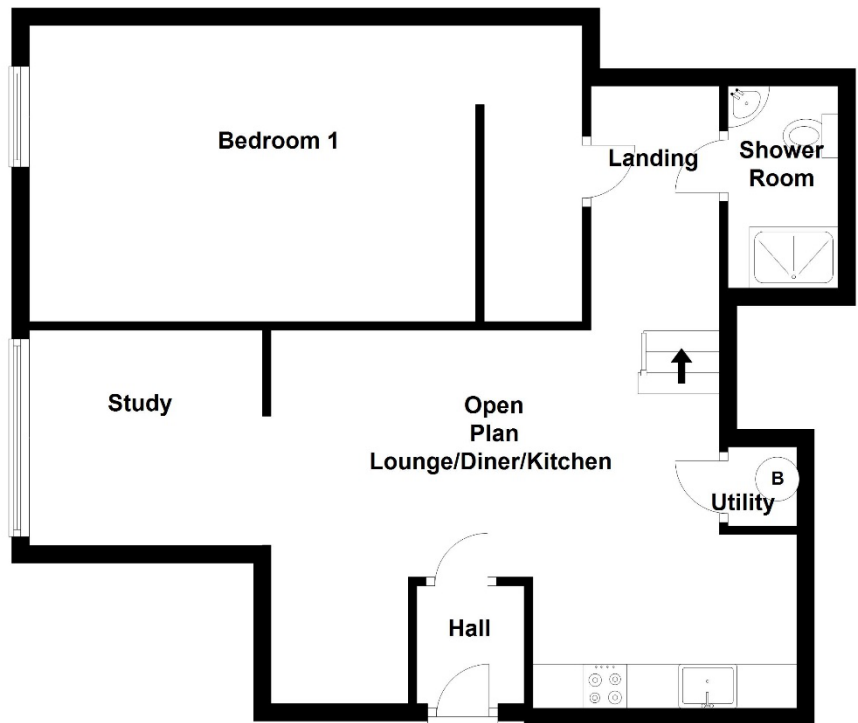


Ground Floor  
Holden Vale Hotel  
Holcombe Road  
Rossendale  
BB4 4NF



Ground Floor

Room	Size (Approx.)
Hall	1.34m x 1.22m
Lounge / Dining / Kitchen	6.02m x 4.30m
Study	2.65m x 2.50m
Utility / Store	
Landing	2.68m x 1.46m
Bedroom 1 / Dressing	5.75m x 3.37m
Shower Room	2.30m x 1.25m



**Farrow & Farrow**  
The Modern Estate Agent



improving lives **headoffice<sup>3</sup>**  
education | residential | corporate