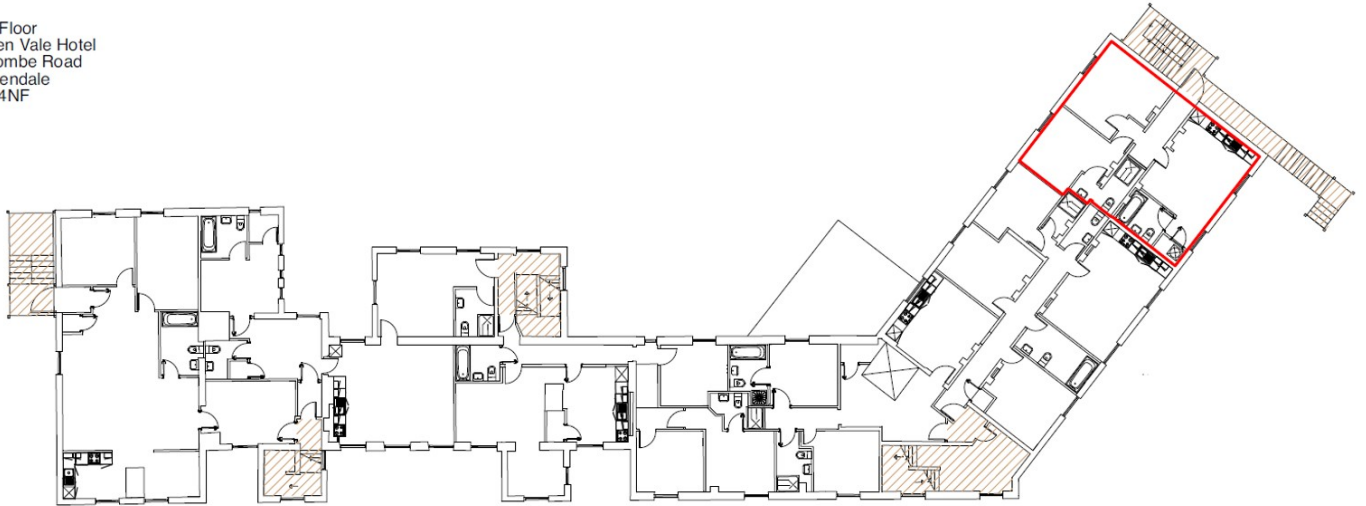


# APARTMENT 9

HOLDEN VALE, HOLCOMBE ROAD, HELMSHORE, BB4 4NF

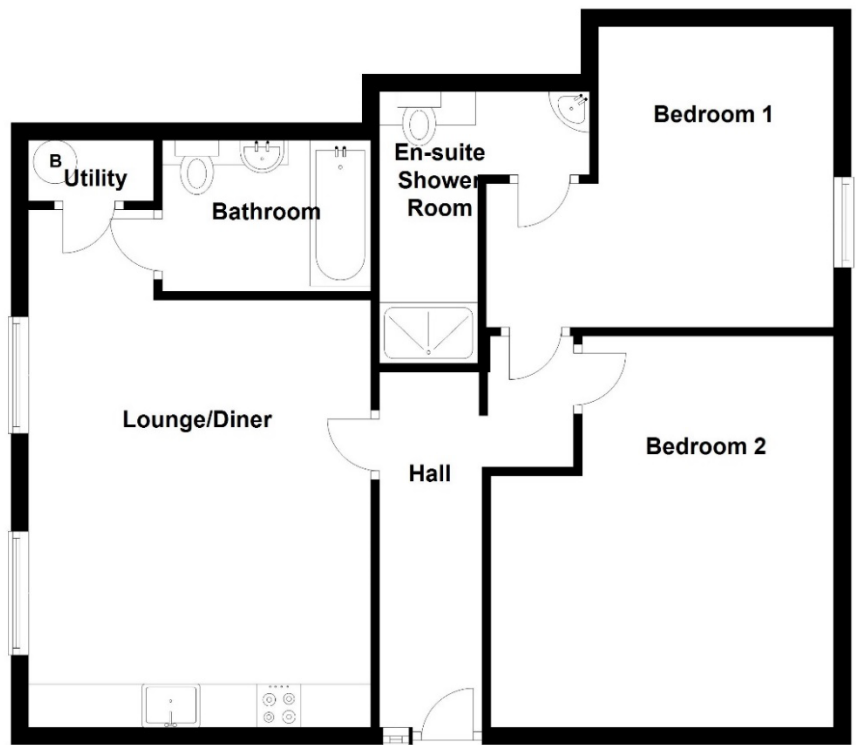


First Floor  
Holden Vale Hotel  
Holcombe Road  
Rossendale  
BB4 4NF



First Floor

Room	Size (Approx.)
Hall	4.09m x 2.23m
Lounge / Dining / Kitchen	5.96m x 3.94m
Utility / Store	
Bathroom	2.27m x 1.74m
Bedroom 1	3.96m x 3.46m
En-Suite Shower Room	
Bedroom 2	3.97m x 3.74m



**Farrow & Farrow**  
The Modern Estate Agent



improving lives **headoffice<sup>3</sup>**  
education | residential | corporate